



**COMMONWEALTH OF KENTUCKY
TRANSPORTATION CABINET**

Frankfort, Kentucky 40622
www.transportation.ky.gov/

Matthew G. Bevin
Governor

Greg Thomas
Secretary

June 19, 2019

CALL NO. 203
CONTRACT ID NO. 194113
ADDENDUM # 1

Subject: KENTON - BOONE - CAMPBELL COUNTIES, 121GR19T009-HSIP
Letting June 21, 2019

- (1) Revised - Material Summary - Pages 76-79 of 211
- (2) Revised - General Summary - Page 82 of 211
- (3) Revised - Signal Modification Detail Sheet - Page 93 of 211
- (4) Revised - Proposal Bid Items - Pages 209-211 of 211

Proposal revisions are available at <http://transportation.ky.gov/Construction-Procurement/>.

If you have any questions, please contact us at 502-564-3500.

Sincerely,

A handwritten signature in cursive script that reads "Rachel Mills".

Rachel Mills, P.E.
Director
Division of Construction Procurement

RM:mr
Enclosures



An Equal Opportunity Employer M/F/D

MATERIAL SUMMARY

CONTRACT ID: 194113

121GR19T009-HSIP

0600818291901

INDUSTRIAL ROAD (KY 1829) IMPROVEMENTS AT THE INTERSECTION OF KY 1829 AND SAFEWAY DR ASPHALT PAVEMENT & ROADWAY REHAB, A DISTANCE OF .15 MILES.

Project Line No	Bid Code	DESCRIPTION	Quantity	Unit
0615	02650	MAINTAIN & CONTROL TRAFFIC - (BOONE KY 1829 AT SAFEWAY)	1.00	LS
0620	02726	STAKING - (BOONE KY 1829 AT SAFEWAY)	1.00	LS
0625	06406	SBM ALUM SHEET SIGNS .080 IN	16.00	SQFT
0630	06410	STEEL POST TYPE 1	29.00	LF
0635	06514	PAVE STRIPING-PERM PAINT-4 IN	1,435.00	LF
0640	06568	PAVE MARKING-THERMO STOP BAR-24IN	40.00	LF
0645	06574	PAVE MARKING-THERMO CURV ARROW	7.00	EACH
0650	06598	PAVEMENT MARKING REMOVAL	173.00	SQFT
0655	22664EN	WATER BLASTING EXISTING STRIPE	482.00	LF
0660	22680EN	QWICK CURB MEDIAN SEPARATOR	340.00	LF
0665	24631EC	BARCODE SIGN INVENTORY	3.00	EACH
0670	24894EC	REMOVE - (PAVEMENT MARKER LENS)	15.00	EACH
0675	20188NS835	INSTALL LED SIGNAL-3 SECTION	8.00	EACH
0680	20266ES835	INSTALL LED SIGNAL- 4 SECTION	2.00	EACH
0685	24955ED	REMOVE SIGNAL EQUIPMENT - (BOONE KY 1829 AT SAFEWAY)	1.00	EACH
0690	02569	DEMOBILIZATION	1.00	LS

CONTRACT ID: 194113

121GR19T009-HSIP

0601900091901

AA HIGHWAY (KY 9) IMPROVEMENTS AT THE INTERSECTION OF KY 9 AND KY 1998/GLORIA TERRELL ASPHALT PAVEMENT & ROADWAY REHAB, A DISTANCE OF .5 MILES.

Project Line No	Bid Code	DESCRIPTION	Quantity	Unit
0005	00001	DGA BASE	645.00	TON
0010	00018	DRAINAGE BLANKET-TYPE II-ASPH	402.00	TON
0015	00100	ASPHALT SEAL AGGREGATE	14.00	TON
0020	00103	ASPHALT SEAL COAT	2.00	TON
0025	00214	CL3 ASPH BASE 1.00D PG64-22	887.00	TON
0030	00332	CL3 ASPH SURF 0.50A PG76-22	144.00	TON
0035	00356	ASPHALT MATERIAL FOR TACK	2.90	TON
0040	01897	ASPHALT WEDGE CURB	315.00	LF
0045	01921	STANDARD BARRIER MEDIAN TYPE 4	500.00	SQYD
0050	01987	DELINEATOR FOR GUARDRAIL BI DIRECTIONAL WHITE	6.00	EACH
0055	02159	TEMP DITCH	765.00	LF
0060	02160	CLEAN TEMP DITCH	383.00	LF
0065	02200	ROADWAY EXCAVATION	773.00	CUYD
0070	02562	TEMPORARY SIGNS	240.00	SQFT

MATERIAL SUMMARY

Project Line No	Bid Code	DESCRIPTION	Quantity	Unit
0075	02650	MAINTAIN & CONTROL TRAFFIC - (CAMPBELL KY 9 AT KY 1998)	1.00	LS
0080	02671	PORTABLE CHANGEABLE MESSAGE SIGN	2.00	EACH
0085	02696	SHOULDER RUMBLE STRIPS	950.00	LF
0090	02701	TEMP SILT FENCE	765.00	LF
0095	02703	SILT TRAP TYPE A	1.00	EACH
0100	02704	SILT TRAP TYPE B	1.00	EACH
0105	02705	SILT TRAP TYPE C	1.00	EACH
0110	02706	CLEAN SILT TRAP TYPE A	1.00	EACH
0115	02707	CLEAN SILT TRAP TYPE B	1.00	EACH
0120	02708	CLEAN SILT TRAP TYPE C	1.00	EACH
0125	02726	STAKING - (CAMPBELL KY 9 AT KY 1998)	1.00	LS
0130	05950	EROSION CONTROL BLANKET	857.00	SQYD
0135	05952	TEMP MULCH	2,303.00	SQYD
0140	05953	TEMP SEEDING AND PROTECTION	1,727.00	SQYD
0145	05963	INITIAL FERTILIZER	.13	TON
0150	05964	MAINTENANCE FERTILIZER	.22	TON
0155	05985	SEEDING AND PROTECTION	3,455.00	SQYD
0160	05989	SPECIAL SEEDING CROWN VETCH	667.00	SQYD
0165	05992	AGRICULTURAL LIMESTONE	2.67	TON
0170	06404	FLEXIBLE DELINEATOR POST-M/Y	10.00	EACH
0175	06514	PAVE STRIPING-PERM PAINT-4 IN	11,098.00	LF
0180	06544	PAVE STRIPING-THERMO-8 IN W	284.00	LF
0185	06545	PAVE STRIPING-THERMO-8 IN Y	153.00	LF
0190	06568	PAVE MARKING-THERMO STOP BAR-24IN	165.00	LF
0195	06569	PAVE MARKING-THERMO CROSS-HATCH	426.00	SQFT
0200	06574	PAVE MARKING-THERMO CURV ARROW	20.00	EACH
0205	06575	PAVE MARKING-THERMO COMB ARROW	3.00	EACH
0210	06598	PAVEMENT MARKING REMOVAL	120.00	SQFT
0215	20430ED	SAW CUT	2,000.00	LF
0220	21289ED	LONGITUDINAL EDGE KEY	1,100.00	LF
0225	21802EN	G/R STEEL W BEAM-S FACE (7 FT POST)	425.00	LF
0230	22520EN	PAVE MARKING-THERMO YIELD BAR-36 IN	20.00	LF
0235	23608EC	YELLOW PAINT FOR MEDIAN SAFETY NOSE	30.00	SQFT
0240	00071	CRUSHED AGGREGATE SIZE NO 57	2.00	TON
0245	00078	CRUSHED AGGREGATE SIZE NO 2	2.00	TON
0250	00522	STORM SEWER PIPE-18 IN	4.00	LF
0255	00521	STORM SEWER PIPE-15 IN	212.00	LF
0260	01000	PERFORATED PIPE-4 IN	912.00	LF
0265	01010	NON-PERFORATED PIPE-4 IN	20.00	LF
0270	01028	PERF PIPE HEADWALL TY 3-4 IN	1.00	EACH
0275	01032	PERF PIPE HEADWALL TY 4-4 IN	1.00	EACH
0280	01310	REMOVE PIPE	7.00	LF
0285	01456	CURB BOX INLET TYPE A	2.00	EACH
0290	01585	REMOVE DROP BOX INLET	1.00	EACH
0295	01691	FLUME INLET TYPE 2	1.00	EACH
0300	01740	CORED HOLE DRAINAGE BOX CON-4 IN	2.00	EACH
0305	02483	CHANNEL LINING CLASS II	25.00	TON
0310	21597EN	REMOVE PERF PIPE HEADWALL	1.00	EACH
0315	20597EC	DITCH EXCAVATION	10.00	CUYD

MATERIAL SUMMARY

Project Line No	Bid Code	DESCRIPTION	Quantity	Unit
0320	22861EN	HIGH STRENGTH GEOTEXTILE FABRIC TY V	10.00	SQYD
0325	06406	SBM ALUM SHEET SIGNS .080 IN	15.75	SQFT
0330	06407	SBM ALUM SHEET SIGNS .125 IN	31.68	SQFT
0335	06410	STEEL POST TYPE 1	203.00	LF
0340	20418ED	REMOVE & RELOCATE SIGNS	3.00	EACH
0345	21373ND	REMOVE SIGN	1.00	EACH
0350	21596ND	GMSS TYPE D - (SURFACE MOUNT)	3.00	EACH
0355	24631EC	BARCODE SIGN INVENTORY	8.00	EACH
0360	04793	CONDUIT-1 1/4 IN	535.00	LF
0365	04830	LOOP WIRE	568.00	LF
0370	04850	CABLE-NO. 14/1 PAIR	2,260.00	LF
0375	04895	LOOP SAW SLOT AND FILL	364.00	LF
0380	20391NS835	ELECTRICAL JUNCTION BOX TYPE A	3.00	EACH
0385	02569	DEMOBILIZATION	1.00	LS
0390	04844	CABLE-NO. 14/5C - (ADDED: 6-19-19)	1,190.00	LF
0395	04820	TRENCHING AND BACKFILLING - (ADDED: 6-19-19)	535.00	LF

CONTRACT ID: 194113

121GR19T009-HSIP

0601900271901

ALEXANDRIA PIKE (US 27) IMPROVEMENTS AT THE INTERSECTION OF US 27 AND KY 1998 ASPHALT PAVEMENT & ROADWAY REHAB, A DISTANCE OF .15 MILES.

Project Line No	Bid Code	DESCRIPTION	Quantity	Unit
0470	02650	MAINTAIN & CONTROL TRAFFIC - (CAMPBELL US 27 AT KY 1998)	1.00	LS
0475	02726	STAKING - (CAMPBELL US 27 AT KY 1998)	1.00	LS
0480	06406	SBM ALUM SHEET SIGNS .080 IN	9.00	SQFT
0485	06410	STEEL POST TYPE 1	14.00	LF
0490	06514	PAVE STRIPING-PERM PAINT-4 IN	694.00	LF
0495	06568	PAVE MARKING-THERMO STOP BAR-24IN	12.00	LF
0500	06574	PAVE MARKING-THERMO CURV ARROW	6.00	EACH
0505	06598	PAVEMENT MARKING REMOVAL	86.00	SQFT
0510	22664EN	WATER BLASTING EXISTING STRIPE	546.00	LF
0515	22680EN	QWICK CURB MEDIAN SEPARATOR	297.00	LF
0520	24631EC	BARCODE SIGN INVENTORY	1.00	EACH
0525	24894EC	REMOVE - (PAVEMENT MARKER LENS)	13.00	EACH
0530	04844	CABLE-NO. 14/5C	1,306.00	LF
0535	20188NS835	INSTALL LED SIGNAL-3 SECTION	14.00	EACH
0540	24955ED	REMOVE SIGNAL EQUIPMENT - (CAMPBELL US 27 AT KY 1998)	1.00	EACH
0545	02569	DEMOBILIZATION	1.00	LS

MATERIAL SUMMARY

CONTRACT ID: 194113

121GR19T009-HSIP

0605913031901

TURKEYFOOT ROAD (KY 1303) IMPROVEMENTS AT THE INTERSECTION OF KY 1303 AND DUDLEY ROAD ASPHALT PAVEMENT & ROADWAY REHAB, A DISTANCE OF .2 MILES.

Project Line No	Bid Code	DESCRIPTION	Quantity	Unit
0400	02650	MAINTAIN & CONTROL TRAFFIC - (KENTON KY 1303 AT DUDLEY)	1.00	LS
0405	02726	STAKING - (KENTON KY 1303 AT DUDLEY)	1.00	LS
0410	06514	PAVE STRIPING-PERM PAINT-4 IN	1,109.00	LF
0415	06568	PAVE MARKING-THERMO STOP BAR-24IN	14.00	LF
0420	06574	PAVE MARKING-THERMO CURV ARROW	11.00	EACH
0425	06598	PAVEMENT MARKING REMOVAL	78.00	SQFT
0430	22664EN	WATER BLASTING EXISTING STRIPE	417.00	LF
0435	24894EC	REMOVE - (PAVEMENT MARKER LENS)	5.00	EACH
0440	04844	CABLE-NO. 14/5C	173.00	LF
0445	20188NS835	INSTALL LED SIGNAL-3 SECTION	4.00	EACH
0450	20189NS835	INSTALL LED SIGNAL-5 SECTION	1.00	EACH
0455	20266ES835	INSTALL LED SIGNAL- 4 SECTION	2.00	EACH
0460	24955ED	REMOVE SIGNAL EQUIPMENT - (KENTON KY 1303 AT DUDLEY)	1.00	EACH
0465	02569	DEMOBILIZATION	1.00	LS

CONTRACT ID: 194113

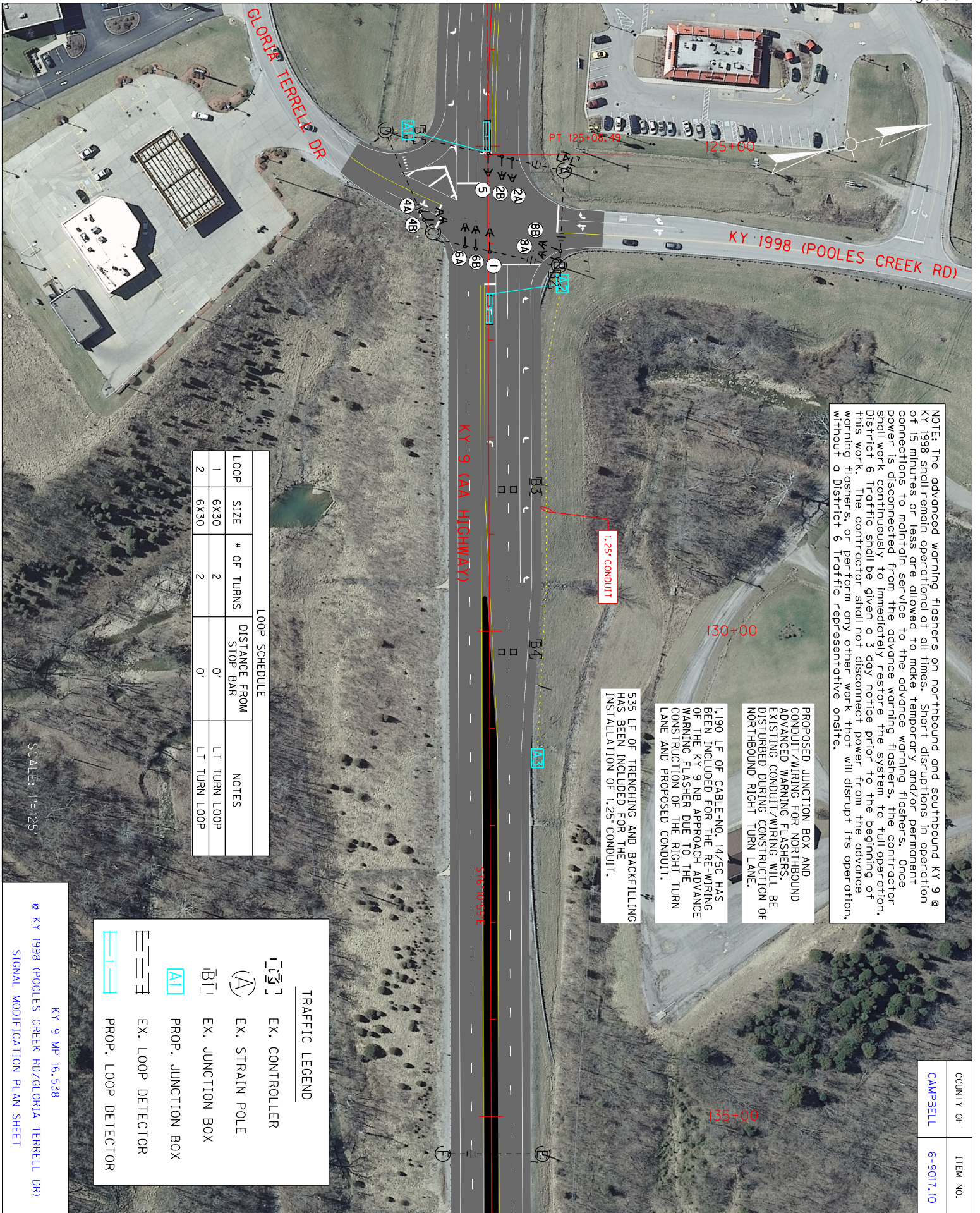
121GR19T009-HSIP

0605913031902

TURKEYFOOT ROAD (KY 1303) IMPROVEMENTS AT THE INTERSECTION OF KY 1303 AND KY 236 ASPHALT PAVEMENT & ROADWAY REHAB, A DISTANCE OF .25 MILES.

Project Line No	Bid Code	DESCRIPTION	Quantity	Unit
0550	02650	MAINTAIN & CONTROL TRAFFIC - (KENTON KY 1303 AT KY 236)	1.00	LS
0555	02726	STAKING - (KENTON KY 1303 AT KY 236)	1.00	LS
0560	06514	PAVE STRIPING-PERM PAINT-4 IN	240.00	LF
0565	06568	PAVE MARKING-THERMO STOP BAR-24IN	28.00	LF
0570	06573	PAVE MARKING-THERMO STR ARROW	2.00	EACH
0575	06574	PAVE MARKING-THERMO CURV ARROW	12.00	EACH
0580	06598	PAVEMENT MARKING REMOVAL	56.00	SQFT
0585	22664EN	WATER BLASTING EXISTING STRIPE	200.00	LF
0590	24894EC	REMOVE - (PAVEMENT MARKER LENS)	6.00	EACH
0595	20188NS835	INSTALL LED SIGNAL-3 SECTION	4.00	EACH
0600	20266ES835	INSTALL LED SIGNAL- 4 SECTION	2.00	EACH
0605	24955ED	REMOVE SIGNAL EQUIPMENT - (KENTON KY 1303 AT KY 236)	1.00	EACH
0610	02569	DEMOBILIZATION	1.00	LS

CAMPBELL COUNTY KY 9 (AA HIGHWAY) MP 16.538 @ KY 1998 & GLORIA TERRELL DRIVE ITEM NO. 6-9017.10 GENERAL SUMMARY SHEET 2 OF 2			
ITEM NUMBER	ITEM	UNIT	QUANTITY
2708	CLEAN SILT TRAP TYPE C	EACH	1
2726	STAKING (KY 9 @ KY 1998)	LS	1
4793	CONDUIT-1 1/4 IN	LF	535
4830	LOOP WIRE	LF	568
4850	CABLE-NO. 14/1 PAIR	LF	2,260
4895	LOOP SAW SLOT AND FILL	LF	364
5950	EROSION CONTROL BLANKET	SQYD	857
5952	TEMP MULCH	SQYD	2,303
5953	TEMP SEEDING AND PROTECTION	SQYD	1,727
5963	INITIAL FERTILIZER	TON	0.13
5964	MAINTENANCE FERTILIZER	TON	0.22
5985	SEEDING AND PROTECTION	SQYD	3,455
5989	SPECIAL SEEDING CROWN VETCH	SQYD	667
5992	AGRICULTURAL LIMESTONE	TON	2.67
6404	FLEXIBLE DELINEATOR POST-M/Y	EACH	10
6406	SBM ALUM SHEET SIGNS .080 IN (4)	SQFT	15.75
6407	SBM ALUM SHEET SIGNS .125 IN (4)	SQFT	32.75
6410	STEEL POST TYPE 1 (4)	LF	203
6514	PAVE STRIPING-PERM PAINT-4 IN (3)	LF	11,098
6544	PAVE STRIPING-THERMO-8 IN W (3)	LF	284
6545	PAVE STRIPING-THERMO-8 IN Y (3)	LF	153
6568	PAVE MARKING-THERMO STOP BAR-24IN (3)	LF	165
6569	PAVE MARKING-THERMO CROSS-HATCH (3)	SQFT	426
6574	PAVE MARKING-THERMO CURV ARROW (3)	EACH	20
6575	PAVE MARKING-THERMO COMB ARROW (3)	EACH	3
6598	PAVEMENT MARKING REMOVAL (3)	SQFT	120
20391NS835	ELECTRIAL JUNCTION BOX TYPE A	EACH	3
20418ED	REMOVE & RELOCATE SIGNS (4)	EACH	3
20430ED	SAW CUT (1)	LF	2,000
20597EC	DITCH EXCAVATION (2)	CUYD	10
21289ED	LONGITUDINAL EDGE KEY (1)	LF	1,100
21373ND	REMOVE SIGN (4)	EACH	1
21596ND	GMSS TYPE D SURFACE MOUNT (4)	EACH	3
21802EN	G/R STEEL W BEAM-S FACE (7 FT POST)	LF	425
22520EN	PAVE MARKING-THERMO YIELD BAR-36 IN (3)	LF	20
22861EN	HIGH STRENGTH GEOTEXTILE FABRIC TY V (2)	SQYD	10
23608EC	YELLOW PAINT FOR MEDIAN SAFETY NOSE (3)	SQFT	30
24631EC	BARCODE SIGN INVENTORY (4)	EACH	8
4820	TRENCHING AND BACKFILLING	LF	535
4844	CABLE-NO. 14/5C	LF	1,190
(1) CARRIED OVER FROM THE PAVING SUMMARY (2) CARRIED OVER FROM THE PIPE DRAINAGE SUMMARY (3) CARRIED OVER FROM THE STRIPING / PAVEMENT MARKING SUMMARY (4) CARRIED OVER FROM THE SIGNING SUMMARY (A) TOTAL PROJECT EARTHWORK SUMMARY: EXCAVATION = 773 CUYD, EMBANKMENT = 164 CUYD			



NOTE: The advanced warning flashers on northbound and southbound KY 9 @ KY 1998 shall remain operational at all times. Short disruptions in operation of 15 minutes or less are allowed to make temporary and/or permanent connections to maintain service to the advance warning flashers. Once power is disconnected from the advance warning flashers, the contractor shall work continuously to immediately restore the system to full operation. District 6 Traffic shall be given a 3 day notice prior to the beginning of this work. The contractor shall not disconnect power from the advance warning flashers, or perform any other work that will disrupt its operation, without a District 6 Traffic representative onsite.







PROPOSED JUNCTION BOX AND CONDUIT/WIRING FOR NORTHBOUND ADVANCED WARNING FLASHERS. EXISTING CONDUIT/WIRING WILL BE DISTURBED DURING CONSTRUCTION OF NORTHBOUND RIGHT TURN LANE.

1190 LF OF CABLE-NO. 14/5C HAS BEEN INCLUDED FOR THE RE-WIRING OF THE KY 9 NB APPROACH ADVANCE WARNING FLASHER DUE TO THE CONSTRUCTION OF THE RIGHT TURN LANE AND PROPOSED CONDUIT.

535 LF OF TRENCHING AND BACKFILLING HAS BEEN INCLUDED FOR THE INSTALLATION OF 1.25" CONDUIT.

LOOP SCHEDULE				NOTES
LOOP	SIZE	# OF TURNS	DISTANCE FROM STOP BAR	
1	6X30	2	0'	LT TURN LOOP
2	6X30	2	0'	LT TURN LOOP

TRAFFIC LEGEND

-  EX. CONTROLLER
-  EX. STRAIN POLE
-  EX. JUNCTION BOX
-  PROP. JUNCTION BOX
-  EX. LOOP DETECTOR
-  PROP. LOOP DETECTOR

COUNTY OF
CAMPBELL

ITEM NO.
6-9017.10

SCALE: 1"=125'

KY 9 MP 16.538
KY 1998 (POOLES CREEK RD/GLORIA TERRELL DR)
SIGNAL MODIFICATION PLAN SHEET

PROPOSAL BID ITEMS

194113

Page 1 of 3

Report Date 6/19/19

Section: 0001 - PAVING

LINE	BID CODE	ALT	DESCRIPTION	QUANTITY	UNIT	UNIT PRIC	FP	AMOUNT
0010	00001		DGA BASE	645.00	TON		\$	
0020	00018		DRAINAGE BLANKET-TYPE II-ASPH	402.00	TON		\$	
0030	00100		ASPHALT SEAL AGGREGATE	14.00	TON		\$	
0040	00103		ASPHALT SEAL COAT	2.00	TON		\$	
0050	00214		CL3 ASPH BASE 1.00D PG64-22	887.00	TON		\$	
0060	00332		CL3 ASPH SURF 0.50A PG76-22	144.00	TON		\$	
0070	00356		ASPHALT MATERIAL FOR TACK	2.90	TON		\$	

Section: 0002 - ROADWAY

LINE	BID CODE	ALT	DESCRIPTION	QUANTITY	UNIT	UNIT PRIC	FP	AMOUNT
0080	01897		ASPHALT WEDGE CURB	315.00	LF		\$	
0090	01921		STANDARD BARRIER MEDIAN TYPE 4	500.00	SQYD		\$	
0100	01987		DELINEATOR FOR GUARDRAIL BI DIRECTIONAL WHITE	6.00	EACH		\$	
0110	02159		TEMP DITCH	765.00	LF		\$	
0120	02160		CLEAN TEMP DITCH	383.00	LF		\$	
0130	02200		ROADWAY EXCAVATION	773.00	CUYD		\$	
0140	02562		TEMPORARY SIGNS	240.00	SQFT		\$	
0150	02650		MAINTAIN & CONTROL TRAFFIC (BOONE KY 1829 AT SAFEWAY)	1.00	LS		\$	
0160	02650		MAINTAIN & CONTROL TRAFFIC (CAMPBELL KY 9 AT KY 1998)	1.00	LS		\$	
0170	02650		MAINTAIN & CONTROL TRAFFIC (CAMPBELL US 27 AT KY 1998)	1.00	LS		\$	
0180	02650		MAINTAIN & CONTROL TRAFFIC (KENTON KY 1303 AT DUDLEY)	1.00	LS		\$	
0190	02650		MAINTAIN & CONTROL TRAFFIC (KENTON KY 1303 AT KY 236)	1.00	LS		\$	
0200	02671		PORTABLE CHANGEABLE MESSAGE SIGN	2.00	EACH		\$	
0210	02696		SHOULDER RUMBLE STRIPS	950.00	LF		\$	
0220	02701		TEMP SILT FENCE	765.00	LF		\$	
0230	02703		SILT TRAP TYPE A	1.00	EACH		\$	
0240	02704		SILT TRAP TYPE B	1.00	EACH		\$	
0250	02705		SILT TRAP TYPE C	1.00	EACH		\$	
0260	02706		CLEAN SILT TRAP TYPE A	1.00	EACH		\$	
0270	02707		CLEAN SILT TRAP TYPE B	1.00	EACH		\$	
0280	02708		CLEAN SILT TRAP TYPE C	1.00	EACH		\$	
0290	02726		STAKING (BOONE KY 1829 AT SAFEWAY)	1.00	LS		\$	
0300	02726		STAKING (CAMPBELL KY 9 AT KY 1998)	1.00	LS		\$	
0310	02726		STAKING (CAMPBELL US 27 AT KY 1998)	1.00	LS		\$	
0320	02726		STAKING (KENTON KY 1303 AT DUDLEY)	1.00	LS		\$	
0330	02726		STAKING (KENTON KY 1303 AT KY 236)	1.00	LS		\$	
0340	05950		EROSION CONTROL BLANKET	857.00	SQYD		\$	

PROPOSAL BID ITEMS

194113

Page 2 of 3

Report Date 6/19/19

LINE	BID CODE	ALT	DESCRIPTION	QUANTITY	UNIT	UNIT PRIC	FP	AMOUNT
0350	05952		TEMP MULCH	2,303.00	SQYD		\$	
0360	05953		TEMP SEEDING AND PROTECTION	1,727.00	SQYD		\$	
0370	05963		INITIAL FERTILIZER	.13	TON		\$	
0380	05964		MAINTENANCE FERTILIZER	.22	TON		\$	
0390	05985		SEEDING AND PROTECTION	3,455.00	SQYD		\$	
0400	05989		SPECIAL SEEDING CROWN VETCH	667.00	SQYD		\$	
0410	05992		AGRICULTURAL LIMESTONE	2.67	TON		\$	
0420	06404		FLEXIBLE DELINEATOR POST-M/Y	10.00	EACH		\$	
0430	06406		SBM ALUM SHEET SIGNS .080 IN	40.75	SQFT		\$	
0440	06407		SBM ALUM SHEET SIGNS .125 IN	31.68	SQFT		\$	
0450	06410		STEEL POST TYPE 1	246.00	LF		\$	
0460	06514		PAVE STRIPING-PERM PAINT-4 IN	14,576.00	LF		\$	
0470	06544		PAVE STRIPING-THERMO-8 IN W	284.00	LF		\$	
0480	06545		PAVE STRIPING-THERMO-8 IN Y	153.00	LF		\$	
0490	06568		PAVE MARKING-THERMO STOP BAR-24IN	259.00	LF		\$	
0500	06569		PAVE MARKING-THERMO CROSS-HATCH	426.00	SQFT		\$	
0510	06573		PAVE MARKING-THERMO STR ARROW	2.00	EACH		\$	
0520	06574		PAVE MARKING-THERMO CURV ARROW	56.00	EACH		\$	
0530	06575		PAVE MARKING-THERMO COMB ARROW	3.00	EACH		\$	
0540	06598		PAVEMENT MARKING REMOVAL	513.00	SQFT		\$	
0550	20418ED		REMOVE & RELOCATE SIGNS	3.00	EACH		\$	
0560	20430ED		SAW CUT	2,000.00	LF		\$	
0570	21289ED		LONGITUDINAL EDGE KEY	1,100.00	LF		\$	
0580	21373ND		REMOVE SIGN	1.00	EACH		\$	
0590	21596ND		GMSS TYPE D (SURFACE MOUNT)	3.00	EACH		\$	
0600	21802EN		G/R STEEL W BEAM-S FACE (7 FT POST)	425.00	LF		\$	
0610	22520EN		PAVE MARKING-THERMO YIELD BAR-36 IN	20.00	LF		\$	
0620	22664EN		WATER BLASTING EXISTING STRIPE	1,645.00	LF		\$	
0630	22680EN		QWICK CURB MEDIAN SEPARATOR	637.00	LF		\$	
0640	23608EC		YELLOW PAINT FOR MEDIAN SAFETY NOSE	30.00	SQFT		\$	
0650	24631EC		BARCODE SIGN INVENTORY	12.00	EACH		\$	
0660	24894EC		REMOVE (PAVEMENT MARKER LENS)	39.00	EACH		\$	

Section: 0003 - DRAINAGE

LINE	BID CODE	ALT	DESCRIPTION	QUANTITY	UNIT	UNIT PRIC	FP	AMOUNT
0670	00071		CRUSHED AGGREGATE SIZE NO 57	2.00	TON		\$	
0680	00078		CRUSHED AGGREGATE SIZE NO 2	2.00	TON		\$	
0690	00521		STORM SEWER PIPE-15 IN	212.00	LF		\$	
0700	00522		STORM SEWER PIPE-18 IN	4.00	LF		\$	
0710	01000		PERFORATED PIPE-4 IN	912.00	LF		\$	
0720	01010		NON-PERFORATED PIPE-4 IN	20.00	LF		\$	
0730	01028		PERF PIPE HEADWALL TY 3-4 IN	1.00	EACH		\$	
0740	01032		PERF PIPE HEADWALL TY 4-4 IN	1.00	EACH		\$	
0750	01310		REMOVE PIPE	7.00	LF		\$	
0760	01456		CURB BOX INLET TYPE A	2.00	EACH		\$	
0770	01585		REMOVE DROP BOX INLET	1.00	EACH		\$	

PROPOSAL BID ITEMS

194113

Page 3 of 3

Report Date 6/19/19

LINE	BID CODE	ALT	DESCRIPTION	QUANTITY	UNIT	UNIT PRIC	FP	AMOUNT
0780	01691		FLUME INLET TYPE 2	1.00	EACH		\$	
0790	01740		CORED HOLE DRAINAGE BOX CON-4 IN	2.00	EACH		\$	
0800	02483		CHANNEL LINING CLASS II	25.00	TON		\$	
0810	20597EC		DITCH EXCAVATION	10.00	CUYD		\$	
0820	21597EN		REMOVE PERF PIPE HEADWALL	1.00	EACH		\$	
0830	22861EN		HIGH STRENGTH GEOTEXTILE FABRIC TY V	10.00	SQYD		\$	

Section: 0004 - SIGNALS

LINE	BID CODE	ALT	DESCRIPTION	QUANTITY	UNIT	UNIT PRIC	FP	AMOUNT
0840	04844		CABLE-NO. 14/5C	1,479.00	LF		\$	
0850	20188NS835		INSTALL LED SIGNAL-3 SECTION	30.00	EACH		\$	
0860	20189NS835		INSTALL LED SIGNAL-5 SECTION	1.00	EACH		\$	
0870	20266ES835		INSTALL LED SIGNAL- 4 SECTION	6.00	EACH		\$	
0880	24955ED		REMOVE SIGNAL EQUIPMENT (BOONE KY 1829 AT SAFEWAY)	1.00	EACH		\$	
0890	24955ED		REMOVE SIGNAL EQUIPMENT (CAMPBELL US 27 AT KY 1998)	1.00	EACH		\$	
0900	24955ED		REMOVE SIGNAL EQUIPMENT (KENTON KY 1303 AT DUDLEY)	1.00	EACH		\$	
0910	24955ED		REMOVE SIGNAL EQUIPMENT (KENTON KY 1303 AT KY 236)	1.00	EACH		\$	

Section: 0005 - TRAFFIC LOOPS

LINE	BID CODE	ALT	DESCRIPTION	QUANTITY	UNIT	UNIT PRIC	FP	AMOUNT
0920	04793		CONDUIT-1 1/4 IN	535.00	LF		\$	
0925	04820		TRENCHING AND BACKFILLING (ADDED: 6-19-19)	535.00	LF		\$	
0930	04830		LOOP WIRE	568.00	LF		\$	
0935	04844		CABLE-NO. 14/5C (ADDED: 6-19-19)	1,190.00	LF		\$	
0940	04850		CABLE-NO. 14/1 PAIR	2,260.00	LF		\$	
0950	04895		LOOP SAW SLOT AND FILL	364.00	LF		\$	
0960	20391NS835		ELECTRICAL JUNCTION BOX TYPE A	3.00	EACH		\$	

Section: 0006 - DEMOBILIZATION

LINE	BID CODE	ALT	DESCRIPTION	QUANTITY	UNIT	UNIT PRIC	FP	AMOUNT
0970	02569		DEMOBILIZATION	1.00	LS		\$	